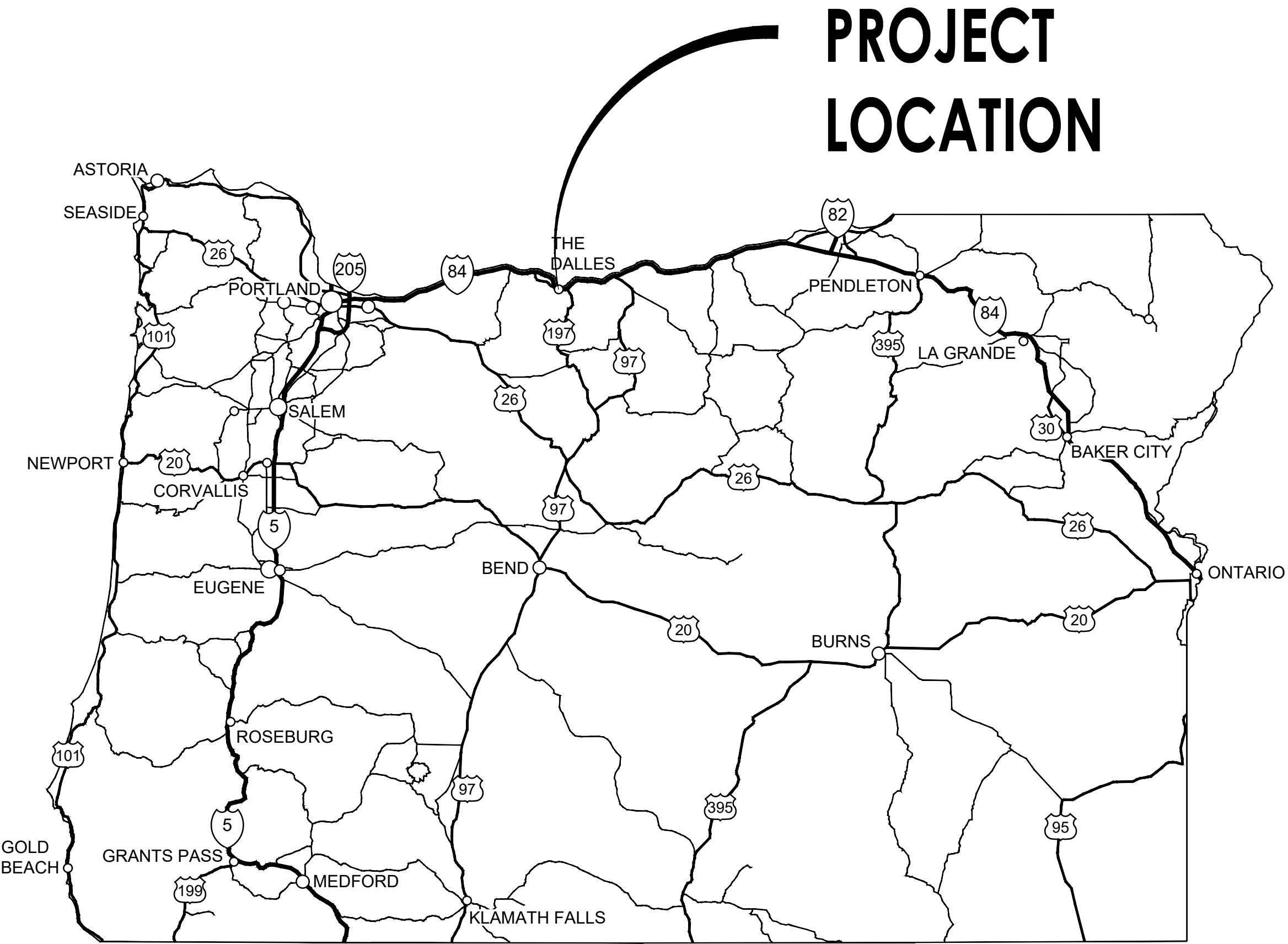


J:\225118 COLUMBIA GORGE COMMUNITY COLLEGE\CD\3 DESIGN\PLANS-1\CGCC G-001.DWG LAST SAVED: 2/3/2026 8:56 AM PRINTED: 2/3/2026 12:03 PM



PROJECT
LOCATION

OWNER
COLUMBIA GORGE COMMUNITY COLLEGE
400 E. SCENIC DR,
THE DALLES, OR 97058
CONTACT: DANIEL SALDIVAR
DSALDIVAR@CDCC.EDU
PHONE: 541-506-6000

OWNERS REPRESENTATIVE
HMK COMPANY
916 SW 17TH STREET
REDMOND, OR 97756
CONTACT: DAREK OLSON
PHONE: 541-213-7184

CIVIL ENGINEER
KELLER ASSOCIATES, INC.
245 COMMERCIAL ST.
SE, SUITE 210
SALEM, OR 97301
CONTACT: ANGELA TAYLOR, PE
PHONE: 503-364-2002



PROJECT
SITE

SEE PROJECT MANUAL FOR BASE BID AND BID ALTERNATE DESCRIPTIONS

245 Commercial St. SE, Suite 210
Salem, OR 97301
(503) 364-2002

NO.	REVISIONS	DATE

This document or any part thereof in detail or design concept is the personal property of Keller Associates, Inc. and shall not be copied in any form without the written authorization of Keller Associates, Inc.

CGCC CAMPUS IMPROVEMENTS
THE DALLES CAMPUS

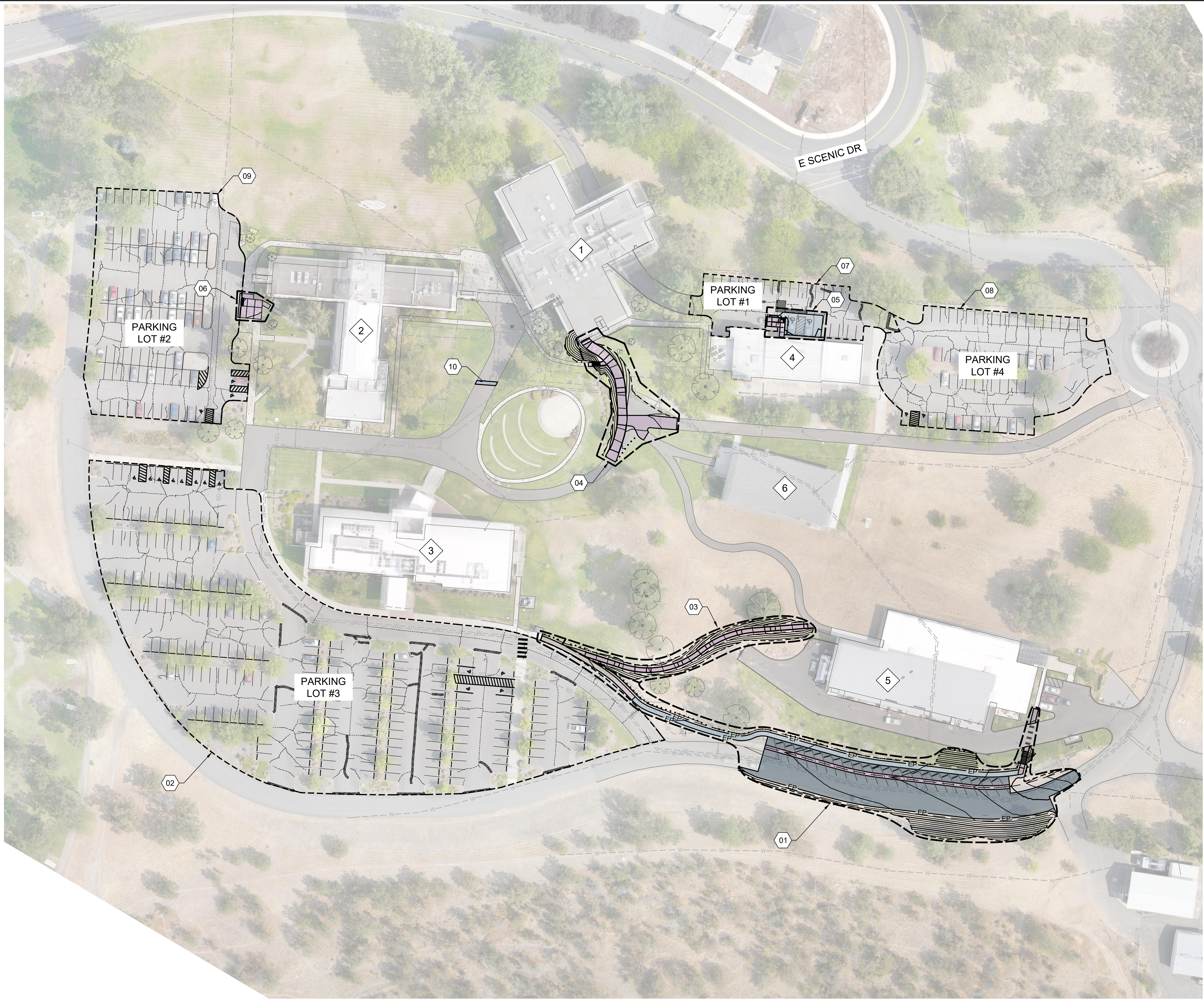
COVER SHEET

DRAWN: --- CHECK: ---

VERIFY SCALE: Scales based on 22"x34" prints.

1-1/2 Inches

PROJECT NO. 225118-000	PAGE
SHEET NO.	G-001



0'50'100'
SCALE: 1"=50'

GENERAL SHEET NOTES

1.

EXISTING UTILITIES ARE SHOWN IN AN APPROXIMATE LOCATION. CONTRACTOR TO VERIFY EXISTING UNDERGROUND UTILITIES PRIOR TO CONSTRUCTION. SEE UTILITY PLANS FOR MORE INFORMATION.

2.

FURNISH MATERIALS WHERE "INSTALL", "PLACE" OR "CONSTRUCT" IS REQUIRED UNLESS NOTED OTHERWISE.

3.

AREAS DISTURBED BY CONSTRUCTION WHERE SURFACE REPAIR IS NOT INDICATED SHALL BE RESTORED TO CONDITIONS FOUND PRIOR TO CONSTRUCTION. THIS COST SHALL BE INCIDENTAL TO THE CONTRACT.

SHEET KEYNOTES

01

BUILDING 3 TO BUILDING 5 CONNECTION; RE: C101 TO C-102

02

PARKING LOT #3 CRACKSEAL; RE: C-107

03

ADA PATH BUILDING 3 TO CONNECTING PATH; RE: C-103

04

BUILDING 1 ADA RAMP; RE: C-104

05

BUILDING 4 ADA RAMP; RE: C-105

06

BUILDING 2 ADA RAMP; RE: C-105

07

PARKING LOT #1 CRACKSEAL/STRIPING; RE: C-106

08

PARKING LOT #4 CRACKSEAL/STRIPING; RE: C-106

09

PARKING LOT #2 CRACKSEAL/STRIPING; RE: C-106

10

PLACE ASPHALT SURFACE REPAIR 4'x8'; RE: C3/C-500

STRUCTURE DESIGNATORS

1

BUILDING 1

2

BUILDING 2

3

BUILDING 3 (HEALTH & SCIENCES BUILDING)

4

BUILDING 4

5

BUILDING 5 (COLUMBIA GORGE REGIONAL SKILLS CENTER)

6

STUDENT RESIDENCE HALL

KELLER ASSOCIATES

245 Commercial St. SE, Suite 210
Salem, OR 97301
(503) 364-2002

REGISTERED PROFESSIONAL ENGINEER
96662PE

OREGON
NOV. 11, 2020
ANGELA J. TAYLOR
EXPIRES: 06-30-2026

COLUMBIA GORGE COMMUNITY COLLEGE

HMK COMPANY

CGCC CAMPUS IMPROVEMENTS
THE DALLES CAMPUS

OVERALL KEYMAP & SURVEY CONTROL

DRAWN: --- CHECK: ---

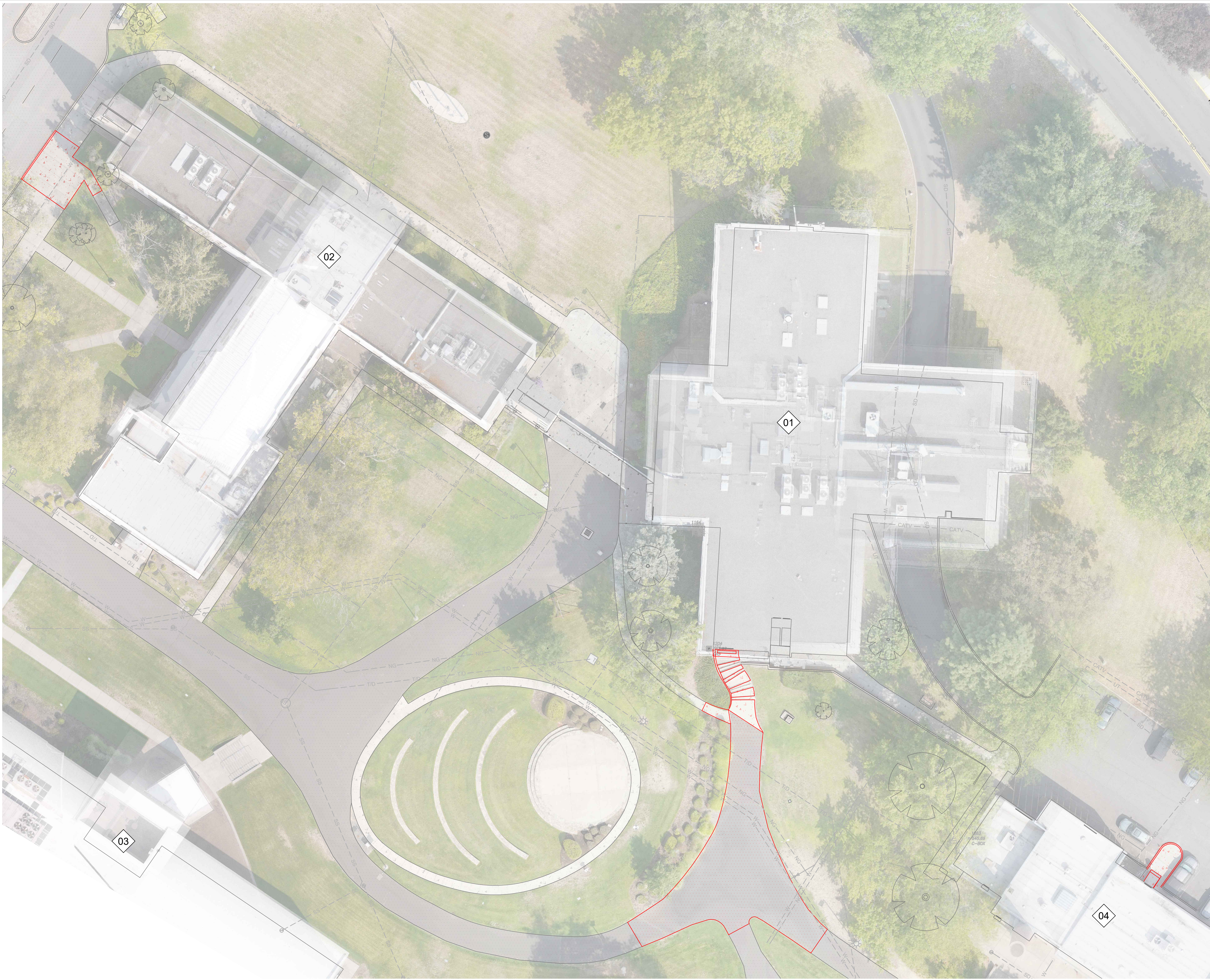
VERIFY SCALE: Scales based on 22"x34" prints.

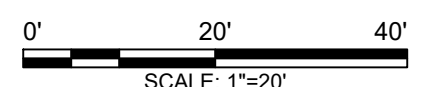
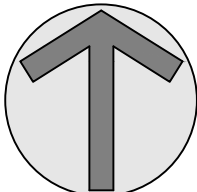
1-1/2 Inches

PROJECT NO.
225118-000

PAGE
SHEET NO.

C-001








GENERAL SHEET NOTES

- UNLESS OTHERWISE NOTED, RETAIN AND PROTECT ALL EXISTING ABOVE AND BELOW GRADE UTILITIES WITHIN THE PROJECT AREA.
- UNLESS OTHERWISE NOTED, RETAIN AND PROTECT ALL SURFACE FEATURES, IE. FENCES, MAILBOXES, LANDSCAPE ETC.
- ALL PROPOSED BOUNDARIES OF CONSTRUCTION THAT ARE PAVEMENT OR CONCRETE SHALL BE SAWCUT, LEAVING A CLEAN VERTICAL EDGE. MATCH NEW MATERIALS TO SAWCUT EDGE.
- SEE SHEET SHEETS C-101 TO C-107 FOR COORDINATES & CONTROL OF DESIGN EXTENTS THAT ALSO CORRESPOND TO REMOVAL EXTENTS.


SHEET KEYNOTES

LEGEND


-  REMOVE ALL ITEMS SHOWN IN RED
-  ASPHALT REMOVAL
-  CONCRETE SIDEWALK REMOVAL

STRUCTURE DESIGNATORS

1	BUILDING 1
2	BUILDING 2
3	BUILDING 3 (HEALTH & SCIENCES BUILDING)
4	BUILDING 4





245 Commercial St SE, Suite 210
Salem, OR 97301
(503) 364-2002



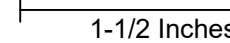
NO.	REVISIONS	DATE

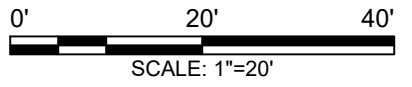
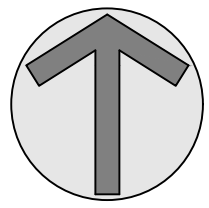
This document or any part thereof in detail or design concept is the personal property of Keller Associates, Inc. and shall not be copied in any form without the written authorization of Keller Associates, Inc.



CGCC CAMPUS IMPROVEMENTS
THE DALLES CAMPUS

DEMOLITION PLAN

DRAWN: ---	CHECK: ---
VERIFY SCALE: Scales based on 22"x34" prints.	
	
PROJECT NO. 225118-000	PAGE
SHEET NO.	C-002



GENERAL SHEET NOTES

1. UNLESS OTHERWISE NOTED, RETAIN AND PROTECT ALL EXISTING ABOVE AND BELOW GRADE UTILITIES WITHIN THE PROJECT AREA.
2. UNLESS OTHERWISE NOTED, RETAIN AND PROTECT ALL SURFACE FEATURES, IE. FENCES, MAILBOXES, LANDSCAPE ETC.
3. ALL PROPOSED BOUNDARIES OF CONSTRUCTION THAT ARE PAVEMENT OR CONCRETE SHALL BE SAWCUT, LEAVING A CLEAN VERTICAL EDGE. MATCH NEW MATERIALS TO SAWCUT EDGE.
4. SEE SHEET SHEETS C-101 TO C-107 FOR COORDINATES & CONTROL OF DESIGN EXTENTS THAT ALSO CORRESPOND TO REMOVAL EXTENTS.



245 Commercial St SE, Suite 210
Salem, OR 97301
(503) 364-2002



NO.	REVISIONS	DATE
This document or any part thereof in detail or design concept is the personal property of Keller Associates, Inc. and shall not be copied in any form without the written authorization of Keller Associates, Inc.		



CGCC CAMPUS IMPROVEMENTS THE DALLES CAMPUS	DEMOLITION PLAN
---	-----------------

DEMOLITION PLAN

LEGEND

- REMOVE ALL ITEMS SHOWN IN RED
- ASPHALT REMOVAL
- CONCRETE SIDEWALK REMOVAL

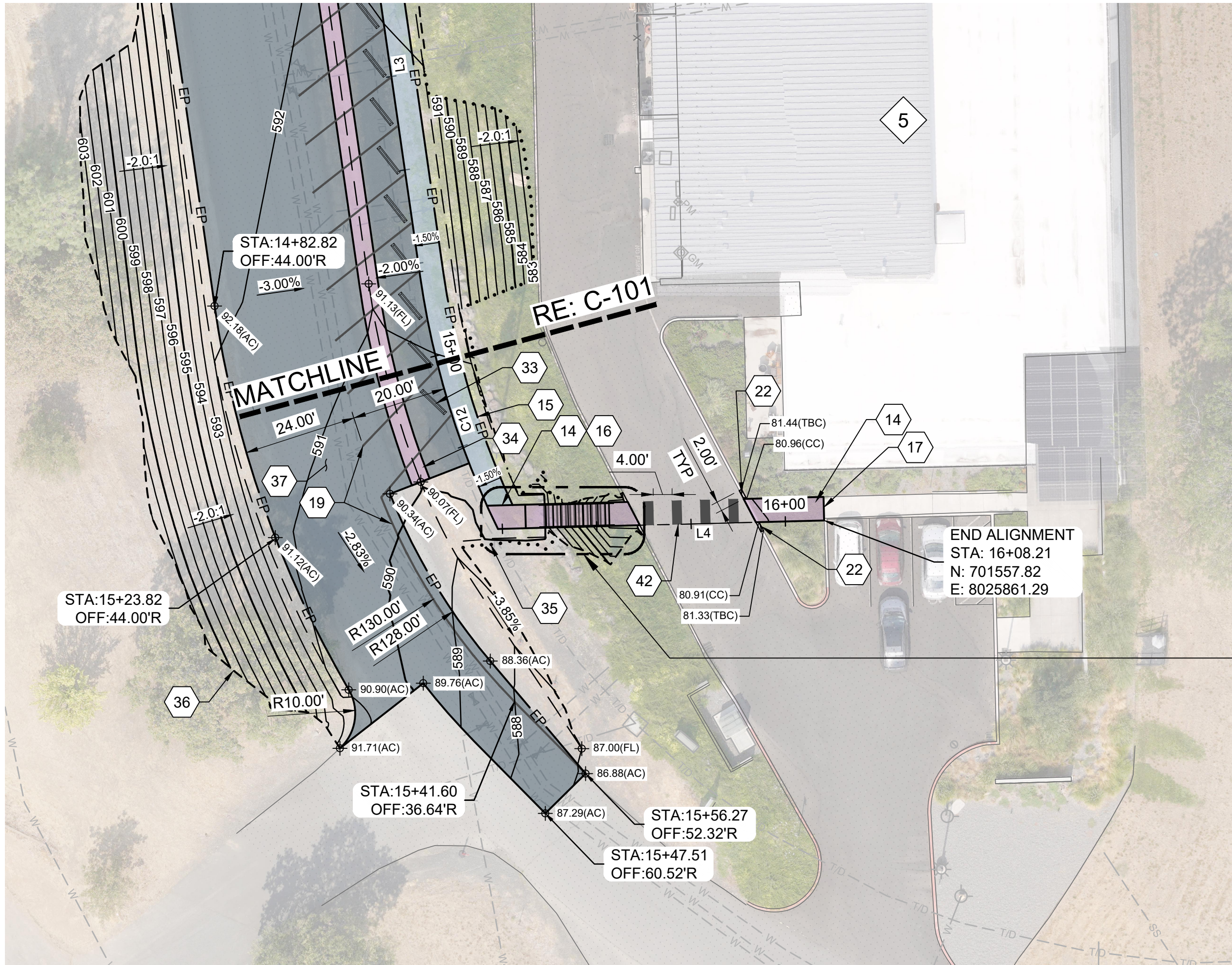
STRUCTURE DESIGNATORS

- 5 BUILDING 5 (COLUMBIA GORGE REGIONAL
SKILLS CENTER)

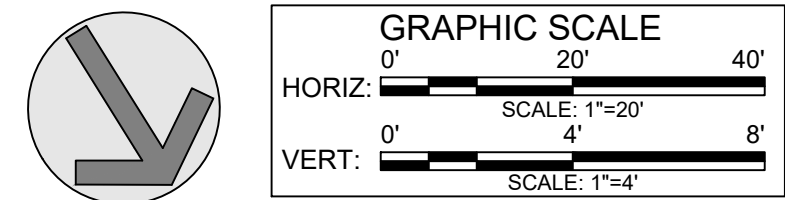
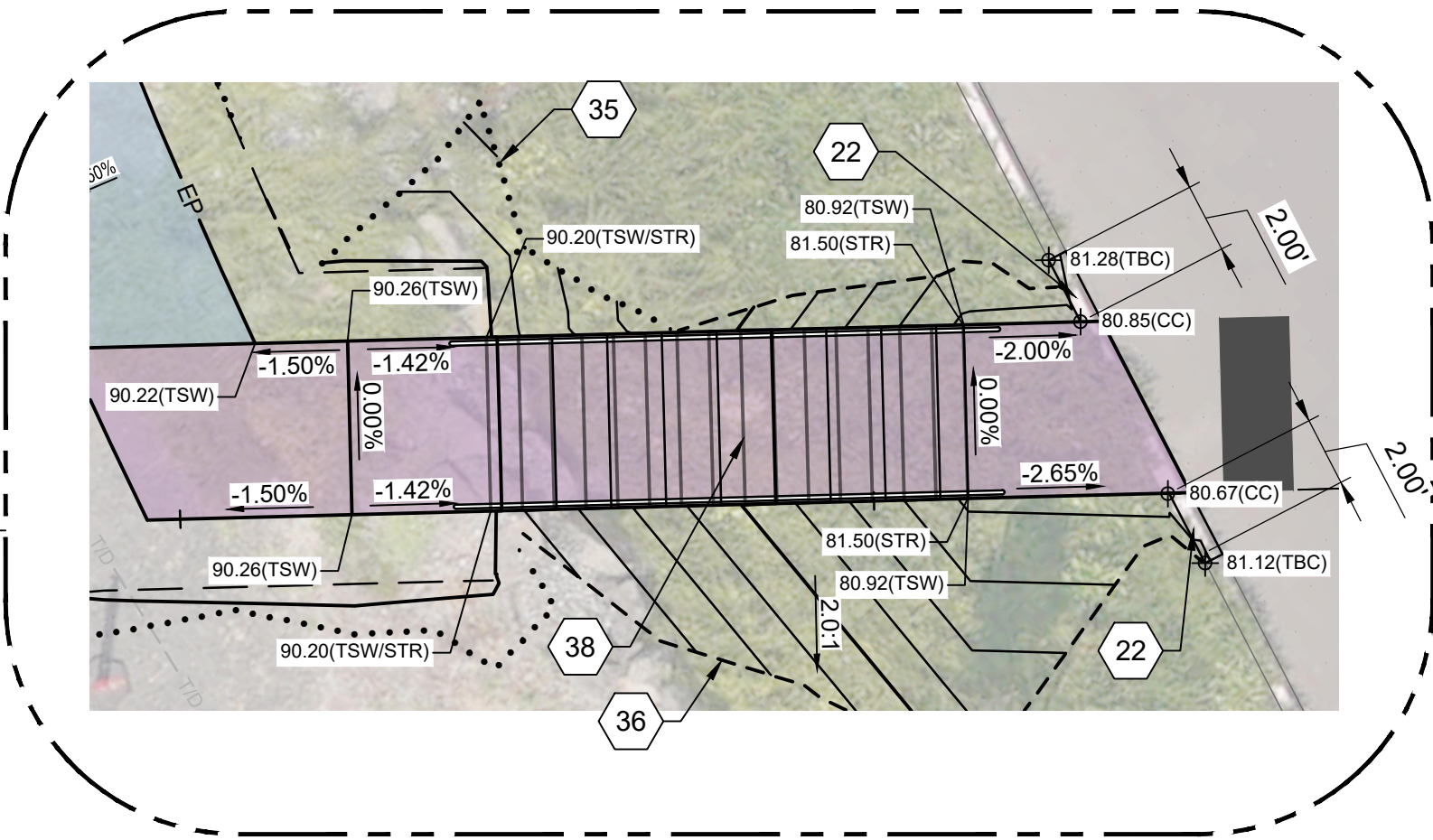
DRAWN: --- CHECK: ---
VERIFY SCALE: Scales based on 22"x34" prints.

PROJECT NO. 225118-000	PAGE
---------------------------	------

C-003



ALIGNMENT BUILDING 3 TO BUILDING 5 CONNECTOR						
Number	Length	Radius	Line/Chord Direction	Chord Length	Start Sta	End Sta
C12	56.24'	180.00'	S62° 07' 29.81"E	56.01'	14+82.82	15+39.05
L4	69.16'		N43° 29' 40.35"E		15+39.05	16+08.21



GENERAL SHEET NOTES

- EXISTING UTILITIES ARE SHOWN IN AN APPROXIMATE LOCATION. CONTRACTOR TO VERIFY EXISTING UNDERGROUND UTILITIES PRIOR TO CONSTRUCTION. SEE UTILITY PLANS FOR MORE INFORMATION.
- FURNISH MATERIALS WHERE "INSTALL", "PLACE" OR "CONSTRUCT" IS REQUIRED UNLESS NOTED OTHERWISE.
- AREAS DISTURBED BY CONSTRUCTION WHERE SURFACE REPAIR IS NOT INDICATED SHALL BE RESTORED TO CONDITIONS FOUND PRIOR TO CONSTRUCTION. THIS COST SHALL BE INCIDENTAL TO THE CONTRACT.

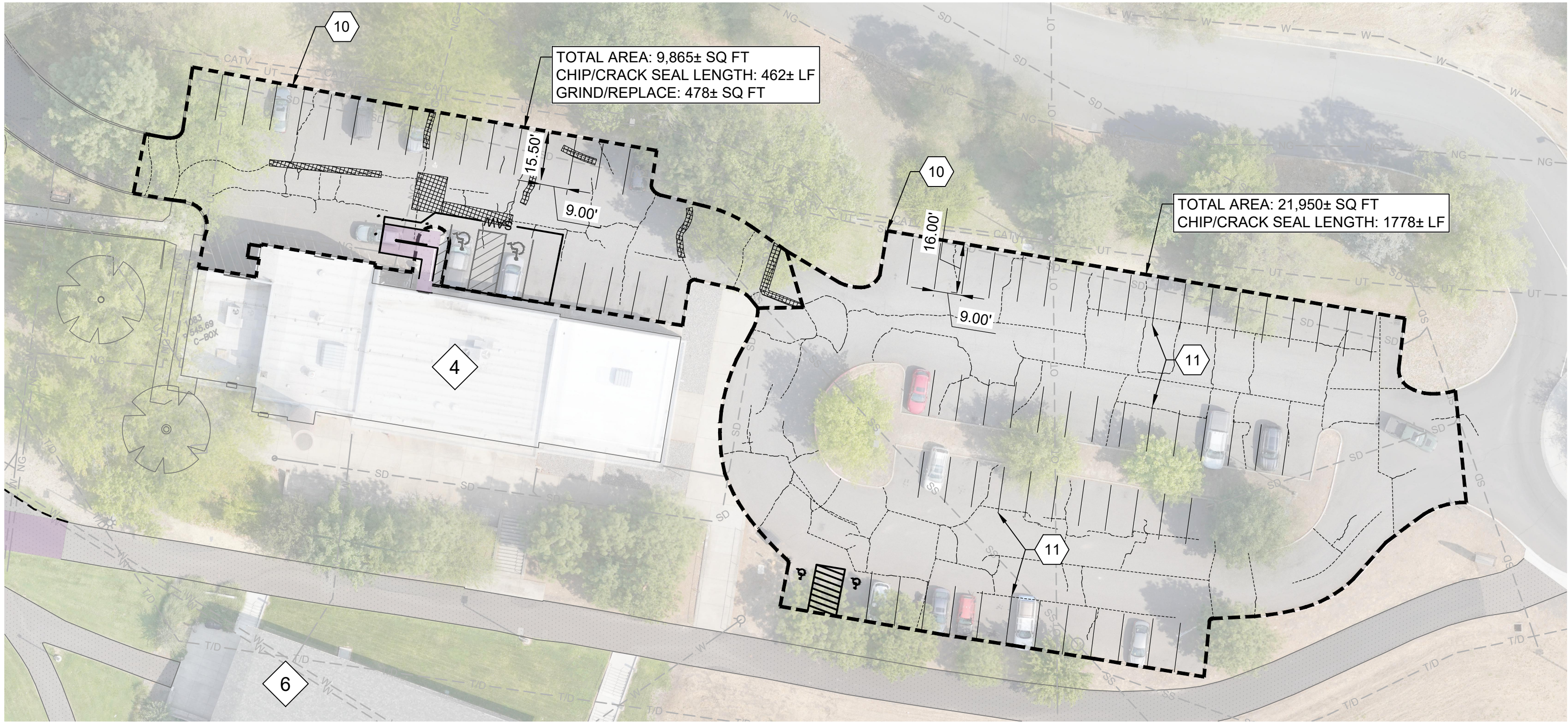
SHEET KEYNOTES

- CONSTRUCT CONCRETE SIDEWALK; RE: B2/C-500
- CONSTRUCT ASPHALT PATH; RE: C5/C-500
- TIE INTO EXISTING CURB & SIDEWALK
- PLACE 4" WHITE STRIPE
- CONSTRUCT EMBEDDED CURB - TYPE A & CURB CUT; RE: B4/C-501
- PLACE PRE-FABRICATED CONCRETE PARKING BLOCK
- CONSTRUCT VALLEY GUTTER; RE: B1/C-500
- DAYLIGHT FILL LINE
- DAYLIGHT CUT LINE
- TYPICAL SECTION 1; RE: A1/C-501
- CONSTRUCT CONCRETE STAIRS & HANDRAIL - TYPE B; RE: B3 & C1/C-500
- PLACE 2' x 5' CROSSWALK STRIPE

ABBREVIATIONS

GRADING ABBREVIATIONS
AC ASPHALT
CC DEPRESSED CURB
FL FLOW LINE
TBC TOP BACK CURB
TSW TOP OF SIDEWALK
STR TOP OF STAIR

PROFILE ABBREVIATIONS
GB GRADE BREAK

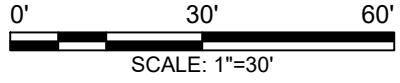
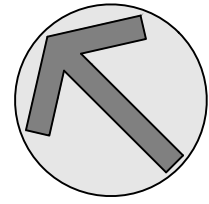


A PARKING LOT BLDG 4 REPAIR
SCALE: 1"=30'



B PARKING LOT BLDG 2 REPAIR
SCALE: 1"=30'

CONTRACTOR SHALL VERIFY CRACK EXTENTS OR CRACKSEAL AND REMOVE/REPLACEMENT PRIOR TO BIDDING AND CONSTRUCTION. QUANTITIES SHOWN ARE APPROXIMATE.



GENERAL SHEET NOTES

- EXISTING UTILITIES ARE SHOWN IN AN APPROXIMATE LOCATION, CONTRACTOR TO VERIFY EXISTING UNDERGROUND UTILITIES PRIOR TO CONSTRUCTION. SEE UTILITY PLANS FOR MORE INFORMATION.
- FURNISH MATERIALS WHERE "INSTALL", "PLACE" OR "CONSTRUCT" IS REQUIRED UNLESS NOTED OTHERWISE.
- AREAS DISTURBED BY CONSTRUCTION WHERE SURFACE REPAIR IS NOT INDICATED SHALL BE RESTORED TO CONDITIONS FOUND PRIOR TO CONSTRUCTION. THIS COST SHALL BE INCIDENTAL TO THE CONTRACT.

SHEET KEYNOTES

- PLACE PARKING LOT SEALCOAT TO LIMITS SHOWN
- PLACE 4" STRIPING AFTER SEALCOAT, REFER TO DIMENSIONS SHOWN OR ADA EQUIVALENT, MATCH EXISTING COLOR

PARKING LOT STRIPING

- 181 PARKING SPACES WITHOUT CURB STOPS (DIMENSIONED AS SHOWN)
- 5 ADA PARKING SPACE

CRACKSEAL & REPLACE LEGEND

- CRACKSEAL LOCATIONS
- SAWCUT ASPHALT, REMOVE / REPLACE WITH 18-INCH WIDTH, TYPICAL FOR ALL CRACKERS GREATER THAN 1/2-INCH WIDTH. QUANTITIES APPROXIMATE, CONTRACTOR SHALL VERIFY

NO.	REVISIONS	DATE

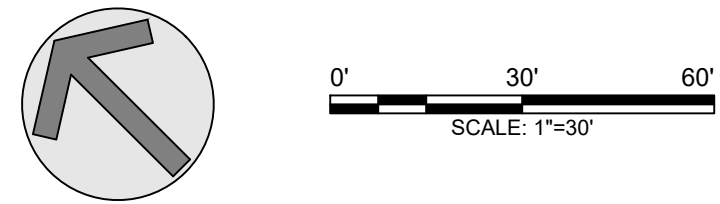
This document or any part thereof in detail or design concept is the personal property of Keller Associates, Inc. and shall not be copied in any form without the written authorization of Keller Associates, Inc.

J:\225118 COLUMBIA GORGE COMMUNITY COLLEGE\CC_CAD\3_DESIGN\DWG_C-100.DWG LAST SAVED: 2/3/2026 12:01 PM PRINTED: 2/3/2026 12:05 PM



C PARKING LOT BLDG 3 REPAIR
SCALE: 1"=30'

CONTRACTOR SHALL VERIFY CRACK EXTENTS OR CRACKSEAL AND REMOVE/REPLACEMENT PRIOR TO BIDDING AND CONSTRUCTION. QUANTITIES SHOWN ARE APPROXIMATE.



GENERAL SHEET NOTES

- EXISTING UTILITIES ARE SHOWN IN AN APPROXIMATE LOCATION, CONTRACTOR TO VERIFY EXISTING UNDERGROUND UTILITIES PRIOR TO CONSTRUCTION. SEE UTILITY PLANS FOR MORE INFORMATION.
- FURNISH MATERIALS WHERE "INSTALL", "PLACE" OR "CONSTRUCT" IS REQUIRED UNLESS NOTED OTHERWISE.
- AREAS DISTURBED BY CONSTRUCTION WHERE SURFACE REPAIR IS NOT INDICATED SHALL BE RESTORED TO CONDITIONS FOUND PRIOR TO CONSTRUCTION. THIS COST SHALL BE INCIDENTAL TO THE CONTRACT.

SHEET KEYNOTES

- PLACE PARKING LOT SEALCOAT TO LIMITS SHOWN
- PLACE 4" STRIPING AFTER SEALCOAT, REFER TO DIMENSIONS SHOWN OR ADA EQUIVALENT, MATCH EXISTING COLOR
- REMOVE CURB STOPS BEFORE SEALCOATING AND REPLACE AFTER

PARKING LOT STRIPING

- 173 PARKING SPACES WITH CURB STOPS (DIMENSIONED AS SHOWN)
- 43 PARKING SPACES WITHOUT CURB STOPS (DIMENSIONED AS SHOWN)
- 8 ADA PARKING SPACE

CRACKSEAL & REPLACE LEGEND

- CRACKSEAL LOCATIONS
- SAWCUT ASPHALT, REMOVE / REPLACE WITH 18-INCH WIDTH, TYPICAL FOR ALL CRACKERS GREATER THAN 1/2-INCH WIDTH. QUANTITIES APPROXIMATE, CONTRACTOR SHALL VERIFY



NO.	REVISIONS	DATE

This document or any part thereof in detail or design concept is the personal property of Keller Associates, Inc. and shall not be copied in any form without the written authorization of Keller Associates, Inc.

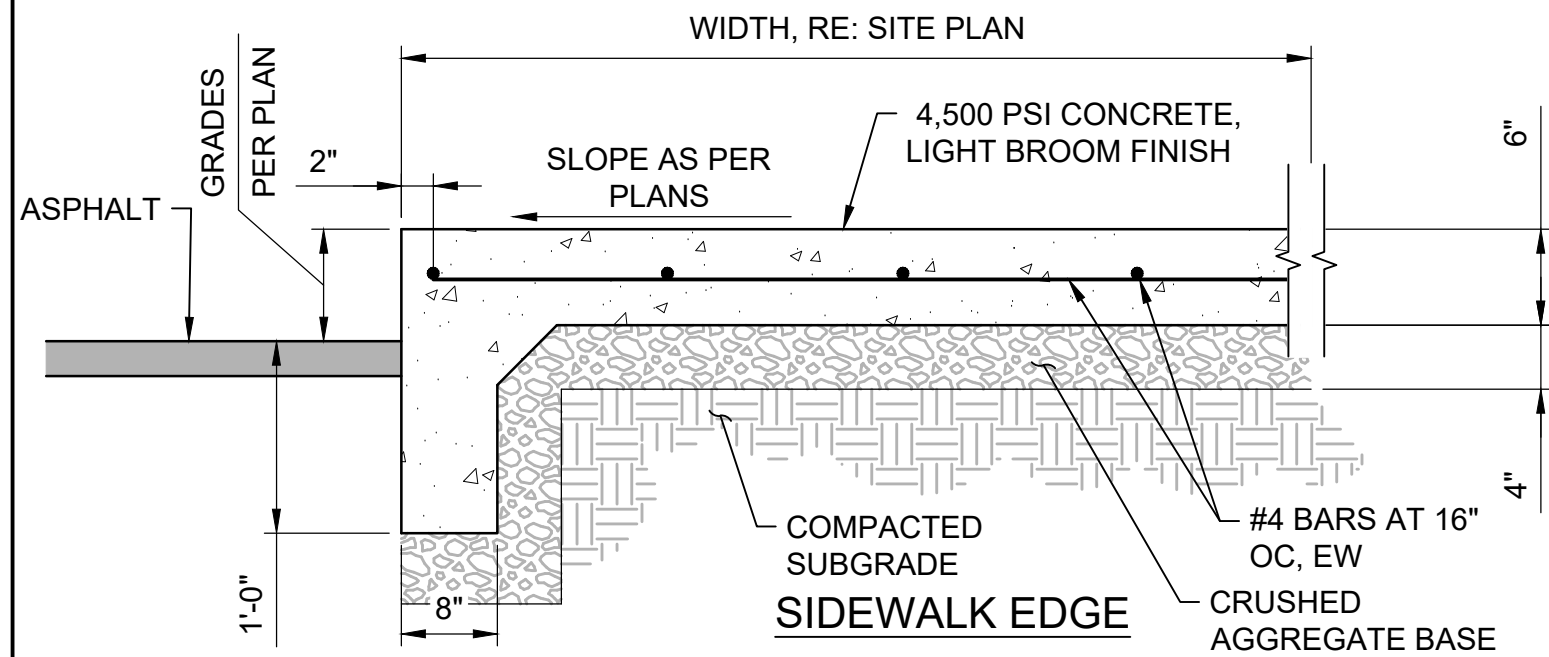


CGCC CAMPUS IMPROVEMENTS
THE DALLES CAMPUS

PARKING LOT 3 REPAIR

DRAWN: ---	CHECK: ---
VERIFY SCALE: Scales based on 22"x34" prints.	
1-1/2 Inches	
PROJECT NO. 225118-000	PAGE
SHEET NO. C-107	

J:\225118 COLUMBIA GORGE COMMUNITY COLLEGE\EC_DESN\ CAD\3_DESIGN\ PLANS-1\CGCC DET2.DWG
LAST SAVED: 2/3/2026 10:39 AM
PRINTED: 2/3/2026 12:06 PM



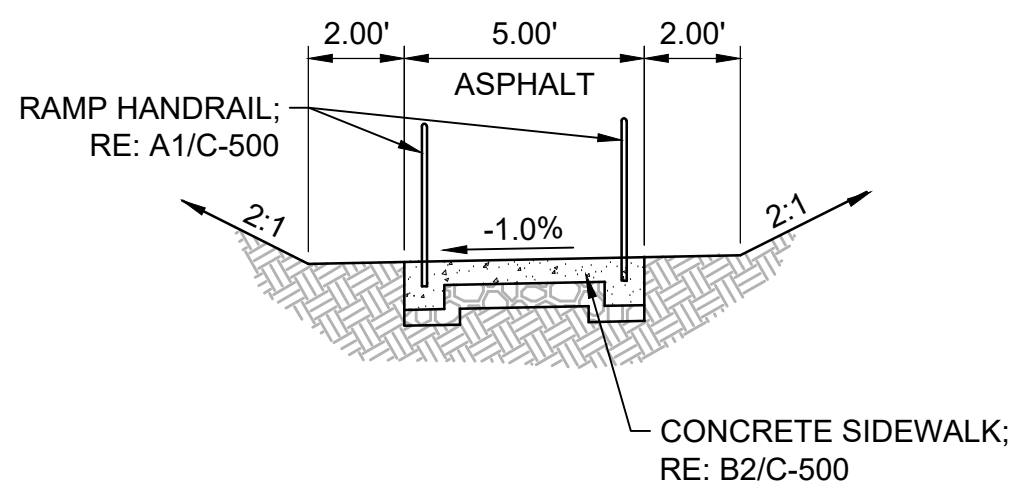
NOTES:

1. PLACE EXPANSION JOINT ADJACENT TO STRUCTURES AND 40 FEET MAXIMUM SPACING.
2. CONTINUOUS PLACEMENT PREFERRED, CONTROL JOINT INTERVALS AT 5 FEET MAXIMUM SPACING.
3. SEE SPECIFICATIONS FOR MATERIALS, PLACEMENT & CONSTRUCTION REQUIREMENTS.
4. PREPARE SUBGRADE IN ACCORDANCE WITH SPECIFICATIONS.
5. EXPANSION JOINT 1/2" PREFORMED JOINT MATERIAL (AASHTO M 213). FILL WITH JOINT SEALER TO 1/4" BELOW SURFACE.

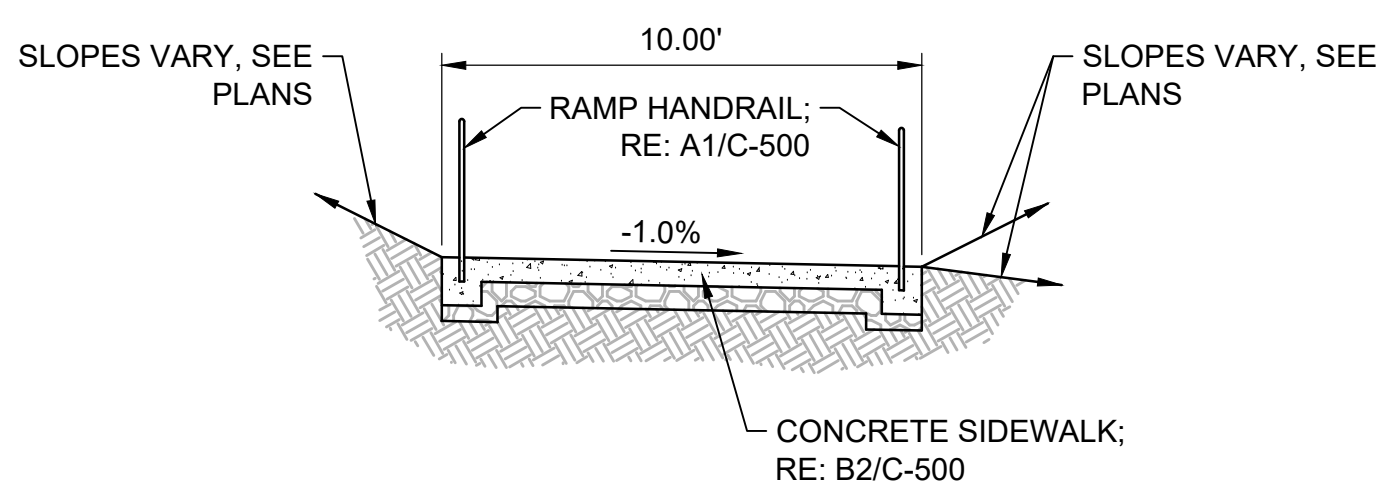
C1

CONCRETE PED RAMP SECTION

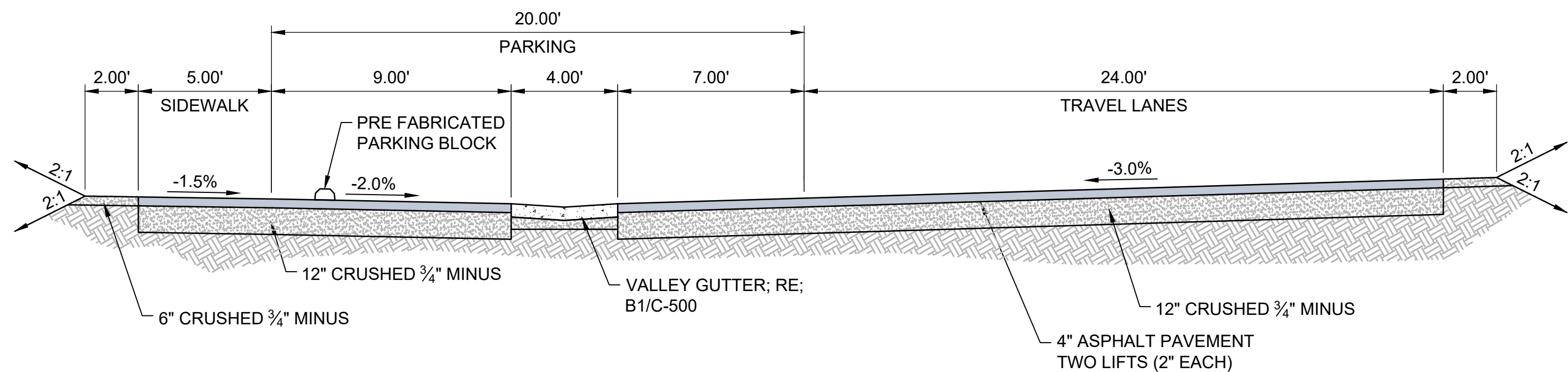
N.T.S.



TYPICAL SECTION 2 - ADA PATH BUILDING 3 TO
CONNECTING PATH



TYPICAL SECTION 3 - BUILDING 1 ADA RAMP

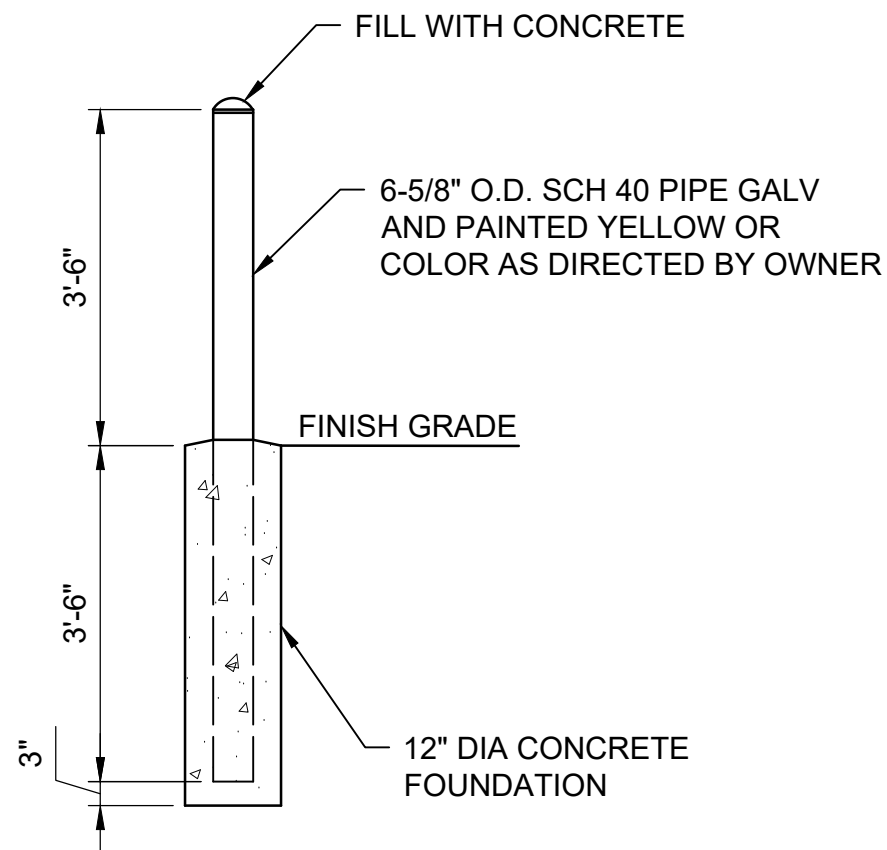


TYPICAL SECTION 1 - BUILDING 3 TO BUILDING 5
PEDESTRIAN CONNECTION

A1

TYPICAL SECTIONS

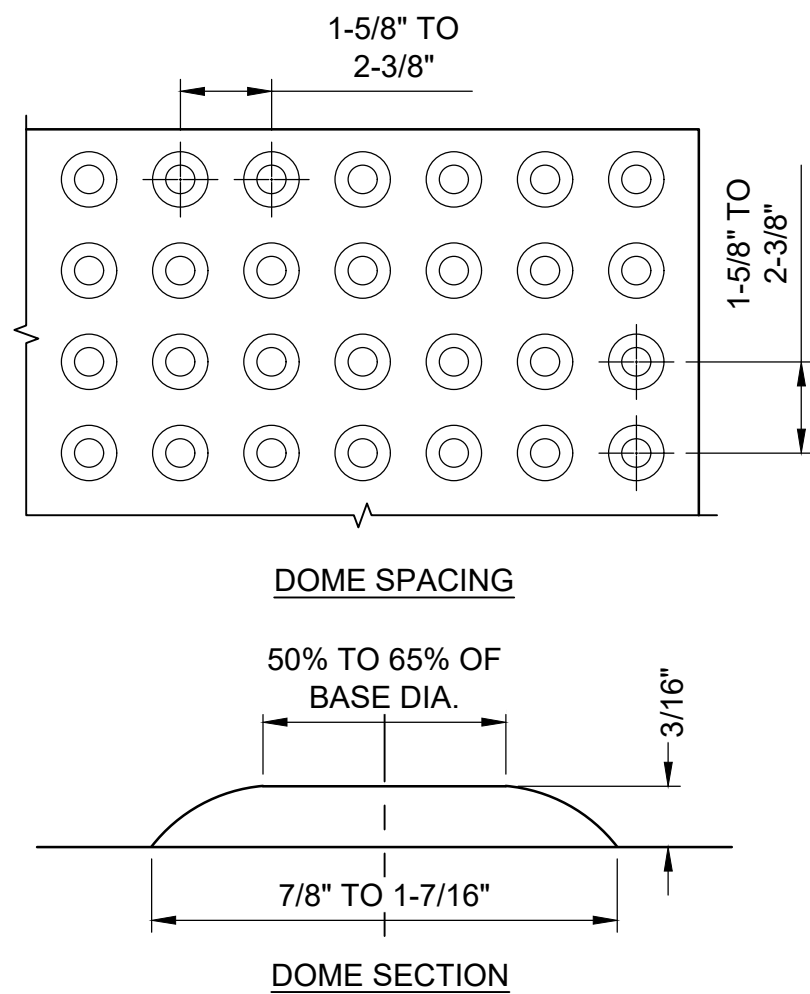
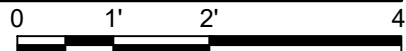
N.T.S.



B3

BOLLARD

1/2" = 1'-0"



A3

DETECTABLE WARNING FOR PEDESTRIAN ACCESS

N.T.S.

NOTES:

1. DETECTABLE WARNING SURFACE SHALL BE REPLACEABLE AND 24" WIDE IN THE DIRECTION OF TRAVEL AND EXTEND THE FULL WIDTH OF THE CURB RAMP, LANDING OR BLEND TRANSITION.
2. DETECTABLE WARNING SURFACES CONSIST OF TRUNCATED DOMES ALIGNED IN A SQUARE OR RADIAL GRID PATTERN.
3. DETECTABLE WARNING DOMES SHALL BE PRE-MANUFACTURED UNITS INTEGRALLY CAST INTO CONCRETE RAMP TO ACHIEVE THE TRUNCATED DOME DIMENSIONS AND SPACING SHOWN IN PLAN. INSTALL IN ACCORDANCE WITH MANUFACTURER'S REQUIREMENTS.
4. METHODS OF CONSTRUCTION AND COLORATION MUST BE APPROVED BY THE OWNER PRIOR TO INSTALLATION. SUBMIT STANDARD MANUFACTURERS COLOR TO OWNER FOR COLOR SELECTION. SURFACES SHALL CONTRAST VISUALLY WITH ADJACENT WALKING SURFACES EITHER LIGHT-ON-DARK OR DARK-ON-LIGHT.